

ER230-2700F

ER230-2700F,
Maxium payload 230 kg with maxium reach 2702 mm.

■ Highlights

The all-new heavy-duty platform product, featuring high-rigidity gear connections combined with advanced algorithms, ensures higher precision, greater rigidity, and more stable high-speed operation; Special coating materials and processes, along with sealed protection design, give the robot excellent high-temperature and corrosion resistance, ensuring stable long-term operation in environments up to 60°C and under mild acid-alkali corrosive conditions;

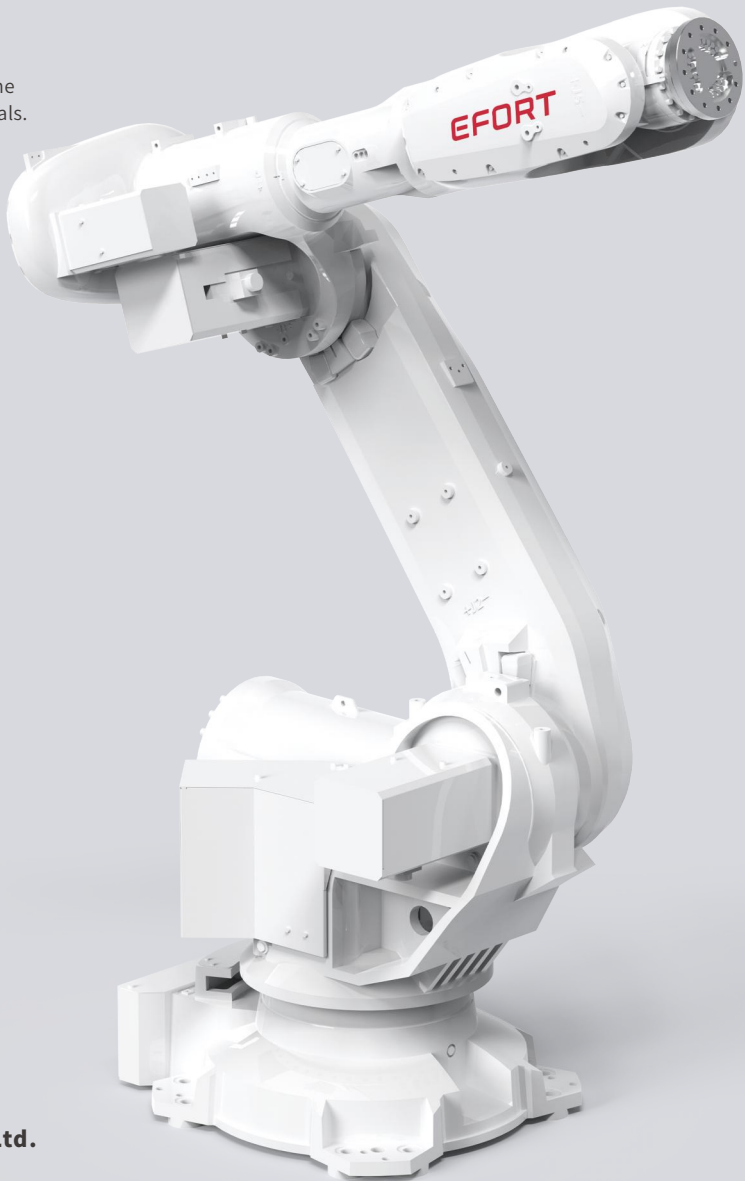
The customized housing design, along with professional protection treatment applied to power and communication cable connectors, meets IP67 protection standards, easily addressing requirements for waterproofing, dust resistance, and oil contamination resistance.

■ Applications

It can be used for scenarios such as casting, forging, and other metal hot-working processes, as well as high-temperature, high-humidity, and corrosive environments.

■ Industries

Suitable for fields like automotive, home appliances, metal, and building materials.



EFORT Intelligent Robot Co., Ltd.

PHONE: (00 86) 400-052-8877
ADDRESS: No. 96, Wanchun East Road, Wuhu, China
(Anhui) Pilot Free Trade Zone
WWW.EFORT.COM.CN

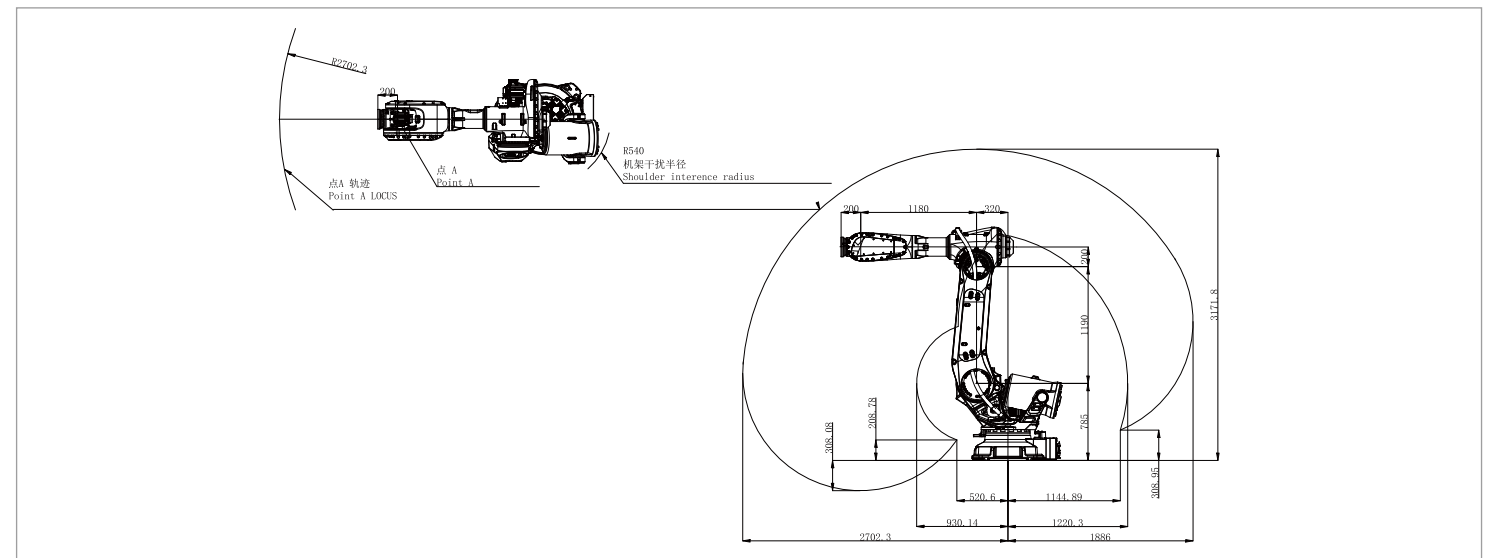
EFORT

SPECIFICATIONS

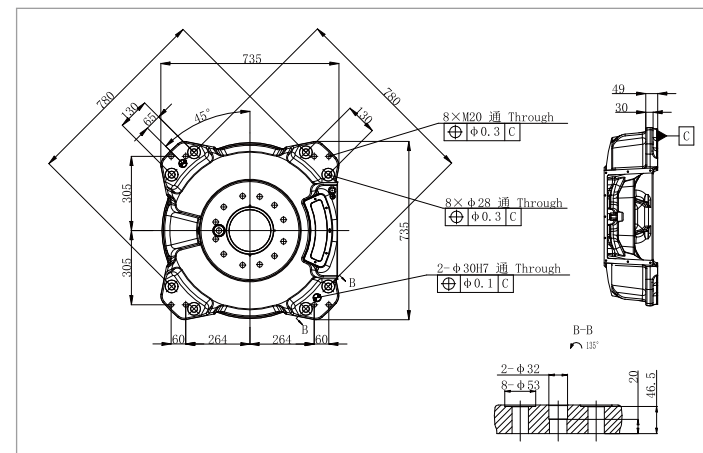
Model		ER230-2700F
Type		Articulated
Controlled axes		6 Axes
Max. payload on wrist		230 kg
Repeatability		±0.05 mm
Robot weight		1345 kg
Reach		2702 mm
Robot IP grade		IP67
Cabinet IP grade		IP54
Drive mode		AC servo drive
Installation		Floor
Installation enviroment	Ambient temperature	0~60 °C
	Ambient humidity	RH≤80% (No dew nor frost allowed)
	Vibration acceleration	4.9 m/s ² (<0.5 G)

Allowable load moment at wrist	J4	1400 N·m
	J5	1400 N·m
	J6	745 N·m
Allowable load inertia at wrist	J4	180 kg·m ²
	J5	180 kg·m ²
	J6	85 kg·m ²
Maximum speed	J1	130°/sec
	J2	110°/sec
	J3	115°/sec
	J4	170°/sec
	J5	120°/sec
	J6	220°/sec
Motion range	J1	±185°
	J2	+65°/-85°
	J3	+180°/-70°
	J4	±360°
	J5	±130°
	J6	±360°

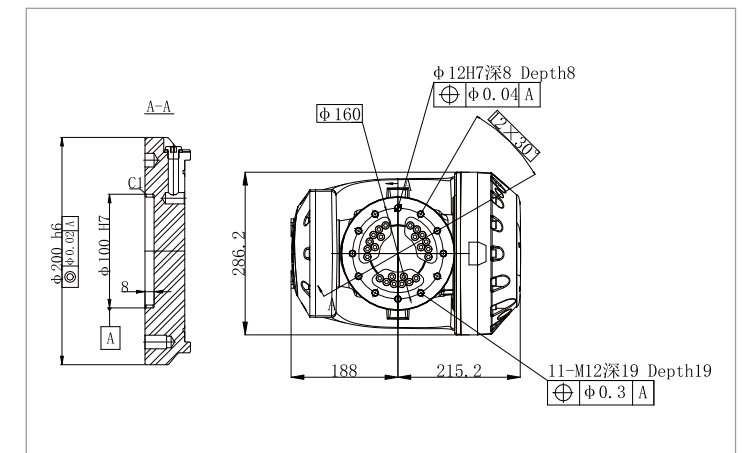
OPERATING SPACE



BASE MOUNTING SIZE



END FLANGE MOUNTING SIZE



*The final interpretation right belongs to EFORT Intelligent Robot Co., Ltd. Any updates will be made without prior notice.

Information Release Time 2025/12